

ECLC12-14 (12V 14Ah)

Specifications

Nominal Voltage	12V	
Nominal Capacity(20 Hr)	14Ah	
Dimension	Length	152±1mm(5.98 inches)
	Width	99±1mm(3.90 inches)
	Containeriner Height	99±1mm(3.90 inches)
	Total Height (With terminal)	102±1mm(4.02 inches)
Approx Weight	Approx3.8kgs(8.38 lbs)	
Design life	18 years	
Terminal	F2	
Container Material	ABS	
Rated Capacity	14.0Ah/0.70A	(20hr, 1.75V/Cell, 25 °C/77°F)
	13.2Ah/1.32A	(10hr, 1.80V/Cell, 25 °C/77°F)
	12.0Ah/2.40A	(5hr, 1.75V/Cell, 25 °C/77°F)
	9.14Ah/9.14A	(1hr, 1.60V/Cell, 25 °C/77°F)
Max. Discharge Current	210A(5s)	
Internal Resistance	Appro≤15.0mΩ	
Operating Temp. Range	Discharge: -30 °C~60 °C	
	Charge: -30 °C~60 °C	
	Storage: -30 °C~60 °C	
Nominal Operating Temp. Range	25±3 °C(77±5°F)	
	Initial Charging Current Less than 3.78A. Voltage 14.4V-14.9V at 25 °C(77°F) Temp. Coefficient-20mV/C	
Cycle Use	No limit on Intital Charging Current Voltage 13.6V-13.8V at 25 °C(77°F) Temp. Coefficient-20mV/C	
Standby Use	40 °C(104°F) 103%	
Capacity affected by Temperature	25 °C(77°F) 100%	
	0 °C(32°F) 86%	
	ECLC series batteries may be stored for up to 10 months at25 °C(77°F) and then a freshening charge is required. For higher temperatures the time interval will be shorter.	



Application

- ◆ Railway and marine systems
- ◆ Electric tools
- ◆ Vehicle in place of walking
- ◆ Lawn mowers
- ◆ Golf trolleys and golf cart
- ◆ Electric toys
- ◆ Portable power
- ◆ Wheelchairs
- ◆ Medical equipments
- ◆ Solar / wind power system



ISO9001 ISO14001

Constant Current Discharge (Amperes) at 25 °C (77F)

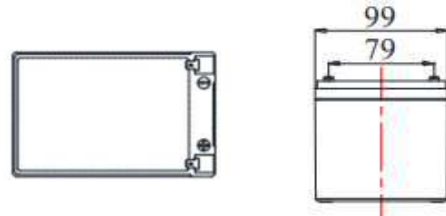
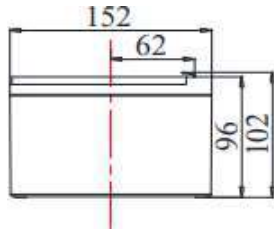
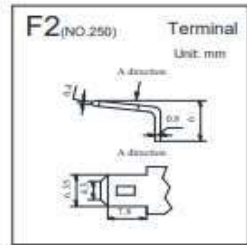
F.V/Time	5min	10min	15min	30min	45min	1h	2h	3h	5h	8h	10h	20h
1.60V	58.0	36.6	26.9	15.97	11.64	9.14	5.78	3.96	2.64	1.77	1.40	0.740
1.67V	54.9	35.1	26.3	15.70	11.45	8.84	5.68	3.88	2.60	1.74	1.38	0.726
1.70V	52.0	33.2	26.0	15.49	11.31	8.56	5.56	3.82	2.54	1.70	1.36	0.714
1.75V	49.6	31.7	24.6	14.98	11.01	8.30	5.46	3.74	2.50	1.69	1.34	0.700
1.80V	45.8	29.5	22.9	14.38	10.65	8.06	5.26	3.60	2.40	1.64	1.32	0.692

Constant Power Discharge (Watts) at 25 °C (77F)

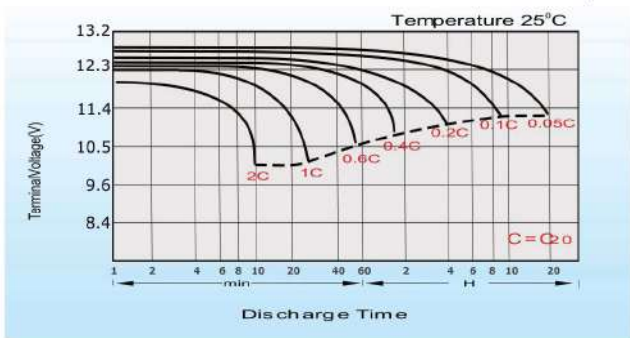
F.V/Time	5min	10min	15min	30min	45min	1h	2h	3h	5h	8h	10h	20h
1.60V	104.06	70.32	52.00	31.06	22.72	17.98	11.34	7.81	5.23	3.53	2.81	1.476
1.67V	99.72	67.47	51.00	30.62	22.42	17.36	11.14	7.67	5.13	3.49	2.78	1.454
1.70V	95.62	63.82	50.42	30.28	22.20	16.74	10.93	7.52	5.05	3.43	2.76	1.436
1.75V	91.60	60.93	47.84	29.36	21.66	16.12	10.73	7.38	4.94	3.40	2.71	1.406
1.80V	85.40	56.99	44.72	28.28	21.00	15.50	10.30	7.09	4.76	3.31	2.69	1.400

ECLC12-14 (12V 14Ah)

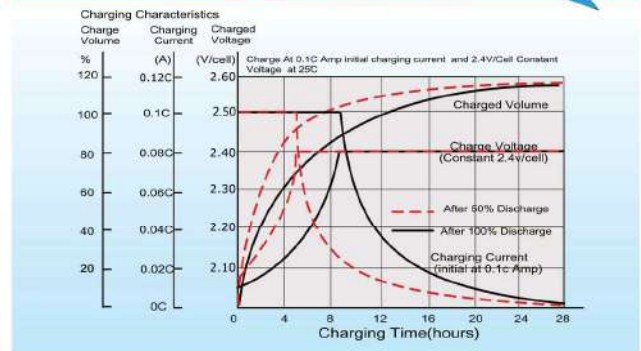
Dimensions



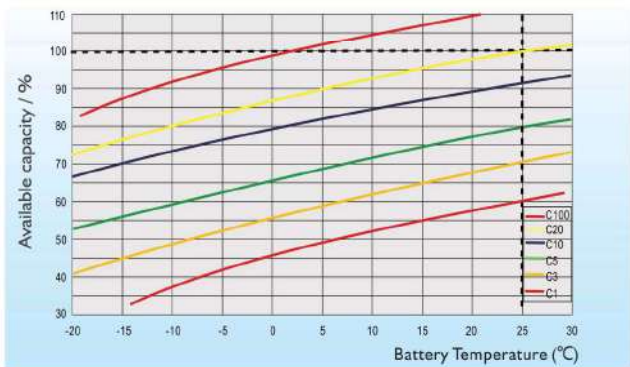
Discharge Characteristics



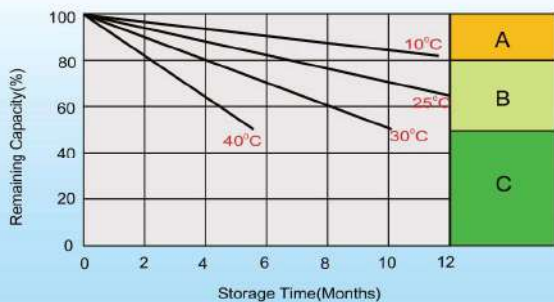
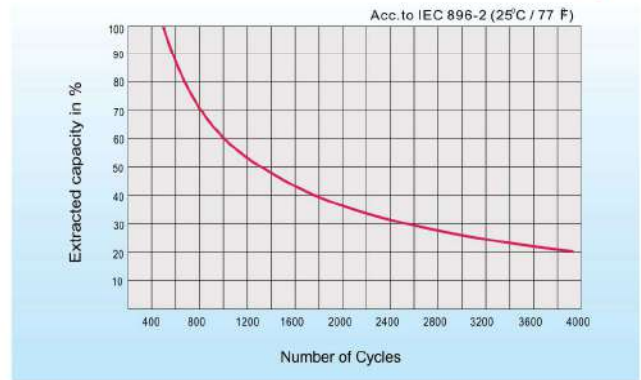
Charging Characteristics



Temperature Effects in Relation to Battery Capacity



Cycle life in Relation to Depth of Discharge



Self-discharge Characteristics

- A** No supplementary charge required
(Carry out supplementary charge before use if 100% capacity is required.)
- B** Supplementary charge required before use. Optional charging way as below:
 1. Charged for above 3 days at limited current 0.25CA and constant volatge 2.25V/cell.
 2. Charged for above 20hours at limited current 0.25CA and constant volatge 2.45V/cell.
 3. Charged for 8-10hours at limited current 0.05CA .
- C** Supplementary charge may often fail to recover the capacity.
The battery should never be left standing till this is reached.

Specifications subject to change without prior notice.